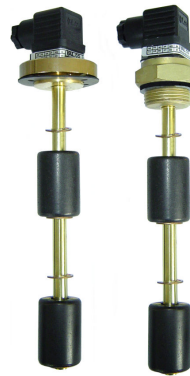


## GENERAL CHARACTERISTICS

Level controls with 2 electrical contacts, reliable, compact and easy to install. Designed to offer a range of level switches to meet the request for a cheap monitoring of the level in small tanks.

The principle of operation of these instruments is based on the drive of 2 reed contacts, located inside of the measuring rod, by a magnetic float.

The only moving elements are the floats that move, for hydrostatic thrust, along the measuring rod; this guarantees extreme ruggedness and a limited need of maintenance.



- Connection: **Brass - Aluminum - PVC**
- Closed cell float.
- Hermetic and replaceable electrical contact.
- Operating ambient temperature -30 /+55 ° C - 90% R.H.
- Easy mounting, threaded or flanged.
- Minimum degree of protection IP65.

## TECHNICAL DATA

Tab.1

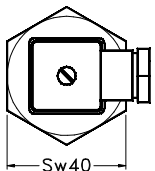
Description	Description								Code	
	Float	SPANSIL –Butadiene Acrylonitrile Copolymer closed cells ∅ 30 x 45 mm S.G. 0,35 Max. pressure 20 Bar								<b>B45</b>
Rod length L0 mm	<b>0200</b>	<b>0250</b>	<b>0300</b>	<b>0350</b>	<b>0400</b>	<b>0450</b>	<b>0500</b>	Brass	<b>O. L0</b>	
Process connection	Threaded		1" UNI 228/1 male thread			SW 40		Brass	<b>25GO</b>	
	Flanged		Double fixing (2 or 3 holes)			∅ 55 mm		Anodized aluminium	<b>25GD</b>	
								PVC	<b>25GV</b>	
								Brass	<b>FOPX</b>	
Electrical contact	SPST	N.C.	N.O.	Overturning the float of 180°		300 VAC 350 VDC	50W	70VA	0,5A 0,7A	<b>3</b>
	Electrical output				DIN 43650 Plug		IP 65			<b>S1</b>
Max. temperature °C	105 °C								<b>L</b>	
Sealing gasket	NBR flat gasket anti-oil								<b>1</b>	

## DIMENSIONS mm.

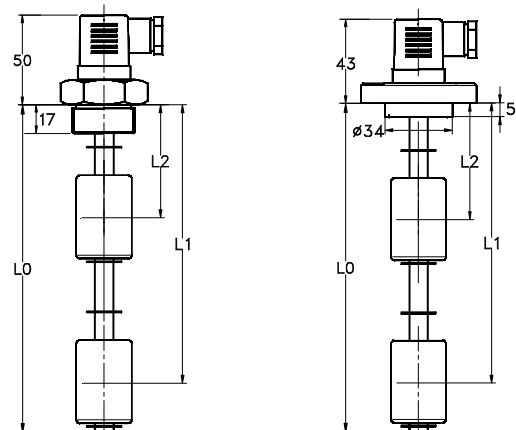
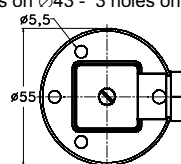
Tab.2

	L0						
	200	250	300	350	400	450	500
L2	65	65	65	75	75	75	85
L1	165	215	265	315	365	415	465

Threaded version 1" UNI-228/1



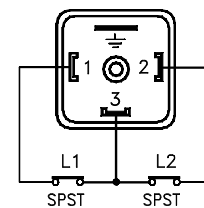
Flanged version  
2 holes on ∅43 - 3 holes on ∅42



## WIRING

Tab.3

C	Common	Common wired contacts
2	NC L1	Contact status in no level condition
2	NC L2	



## NOMENCLATURE

M2	B45	3	0500	O	FOPX	S1	L	1	C22
•									
	•								
		•							
			•						
				•					
					•				
						•			
							•		
								•	
									•

Type
Tab.1 Float
Tab.1 Electrical contact
Tab.2 Total length = L0 mm.
Tab.1 Rod material
Tab.1 Process connection
Tab.1 Electrical output
Tab.1 Temperature class
Tab.1 Sealing gasket
Tab.3 Wiring